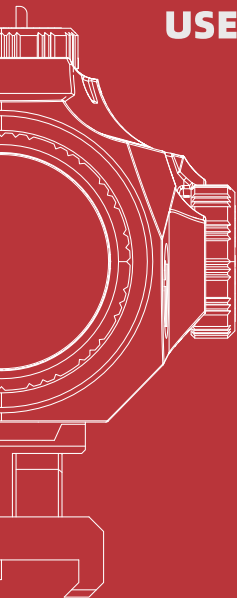




USER MANUAL

C1 4x32



C1

Manual # VI Series
2025041501



READ IT BEFORE USE!!!

READ AND UNDERSTAND THE CONTENTS OF YOUR FIREARM'S AND SCOPE MANUAL. FOLLOW ALL STANDARD SAFETY PRECAUTIONS AND PROCEDURES DURING FIREARM OPERATION.



VICTOPTICS



USER MANUAL



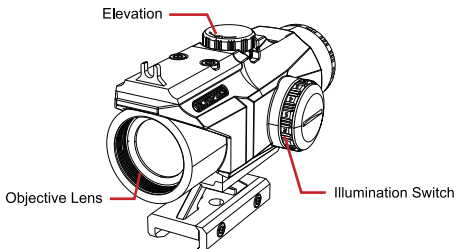
FACEBOOK



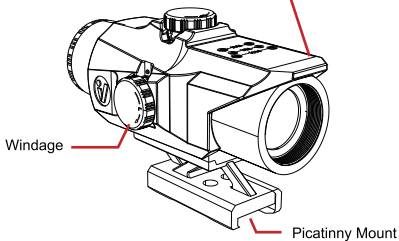
INSTAGRAM

- NEVER LOOK AT THE SUN THROUGH THE SCOPE (OR ANY OTHER OPTICAL INSTRUMENT). IT MAY PERMANENTLY DAMAGE YOUR EYES.
- MAKE SURE FIREARMS ARE UNLOADED AND POINTED IN THE SAFE DIRECTION.

PRODUCT FUNCTION DIAGRAM



MOJ™ TEK™ MGT™ Red Dot Footprint



EYEPiece FOCUSING

The eyepiece is designed to provide a precise fast focus at certain eye relief. The eyepiece will focus faster than your eye can compensate for any inaccuracy in your adjustment.

Set the scope parallax to infinity . Turn back out of the focus ring until the reticle is completely fuzzy. Look through the scope at a plain background. Turn the eyepiece focus ring until the reticle itself is maximally sharp and clear. Having made your adjustment, re-check it quickly.

MOUNTING

The scope is installed on the gun by means of an integrated 21mm Picatinny mount. For safety reasons, allow at least 3 inches of clearance between the scope and your eyes when shooting. Move the scope forward or backward to acquire the proper eye relief. Place the scope on the picatinny rail. Tighten all mounting screws to fix the scope firmly on the rifle.



Do not over-tighten the mount, or it may damage your scope. Max 30-35 in/lbs (3.39-3.955N.m) for mount base screws.

ZEROING

The scope features adjustable audible-click elevation and windage adjustments. Referring to the point of impact, you will need to adjust both windage and elevation turrets. Elevation is the vertical (up-and-down) adjustment, usually on the top of the scope. Windage is the horizontal (left-to-right) adjustment, usually on the right of the scope.

The scope features 1/2 MOA windage & elevation adjustment with audible clicks, meaning that 1 click moves the point of impact = 1/2 inch at 100 yards. With the scope mounted, rest the firearm onto a solid support and aim at a target 100 yards away. Slowly shoot a small 3 to 5 round test group onto your target. Adjust windage & elevation screws in the direction you want to move the bullet impact. Should your impacts be below your point of aim, dial UP to reach zero. Should your impacts be left to your point of aim, dial R(right) to reach zero. Each click of adjustment moves the point of impact. Shoot another 3 to 5 round in a test group. Repeat until you are satisfied with the point of aim.

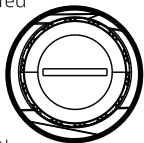
TURNING ON & ILLUMINATION ADJUSTMENT

Placed on the left side of the scope, the illumination adjustment knob controls the intensity level. It lights up all or a portion of the reticle. The scope has 5 intensity levels, red & green. Turn the knob to turn on the illumination. Go on turning the knob will adjust the intensity level.

You can adjust the intensity level to #5, which is the brightest setting. Set the knob to "R/G" will turn the illumination off.

BATTERY EXCHANGE

Your scope illumination is powered by 1 piece of CR2032 lithium button battery. To insert, remove, or replace the battery: Release the battery compartment cover.



Remove the used battery from the battery compartment. Insert a new one from a reputable manufacturer with the positive (+) side UP. Screw on the battery compartment cover.



Should the illumination grows dim or not turn on, you will need to exchange the battery.

MAINTENANCE

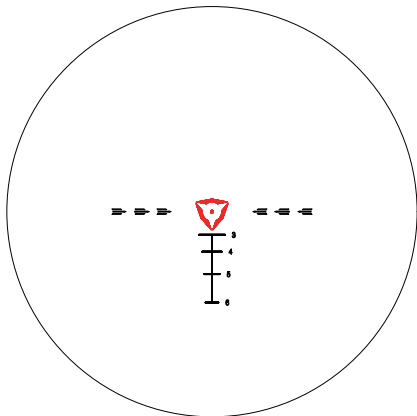
Your scope, though amazingly tough, is a precision instrument that deserves reasonable cautious care.

- When cleaning the lens, first blow away any dirt and dust, or use a soft lens brush. Fingerprints and lubricants can be wiped off with lens tissue, or soft microfiber clean cotton cloth, moistened with lens cleaning fluid.
- All moving parts of the scope are permanently lubricated. Do not try to lubricate them.
- No maintenance is needed on the scope's external surface, except to occasionally wipe off dirt or fingerprints with a soft cloth.
- Use lens covers whenever convenient.

STORAGE

Avoid storing the scope in hot places, such as the passenger compartments of vehicles on hot days. The high temperatures could adversely affect the lubricants and sealants. A vehicle's trunk, a gun cabinet, or a closet is preferable. Never leave the scope where direct sunlight can enter either the scope lens.

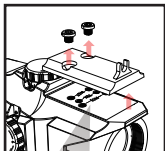
RETICLE



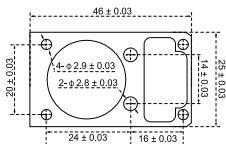
- **INGESTION HAZARD:** This product contains a button cell or coin battery.
- **DEATH:** or serious injury can occur if ingested.
- A swallowed button cell or coin battery can cause **Internal chemical burns** in as little as **2 hours**.
- Keep new and used batteries **out of reach of children**.
- **Seek immediate medical attention** if a battery is suspected to be swallowed or inserted inside any part of the body.
- Battery misuse or abuse may result in leakage, fire or explosion.

MOUNTING MICRO RED DOT SIGHTS

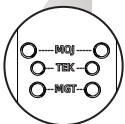
Remove the top plate from the platform, and place the red dot sight on the scope. Tighten two mounting screws to fix the red dot sight firmly on the scope.



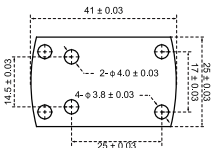
TEK™ Red Dot Footprint



Setting: mm

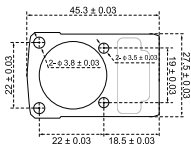


MGT™ Red Dot Footprint



Setting: mm

MOJ™ Red Dot Footprint



Setting: mm

NOTE

[illegible]

ONE YEAR WARRANTY

Your VictOptics product is warranted free of defects in materials and workmanship for a period of 1 year from the time of purchase by the original owner. In the event of a defect under this warranty, we will, at our option, repair or replace the product at no charge to you. If we can't repair your product, we will replace it with a product of equal or better physical condition. This warranty does not cover damages caused by misuse, improper handling, loss, theft, deliberate damage, or cosmetic damage. The battery is not covered under this warranty. Also, this warranty is null and void if modification or maintenance is provided by someone other than VictOptics. This warranty is non-transferable.

For products not directly purchased from us, please contact the local dealer for applicable warranty info. Any warranty must be registered and complete warranty terms by the link:

[VICTOPTICS.COM/CONTACT-US](https://victoptics.com/contact-us)

