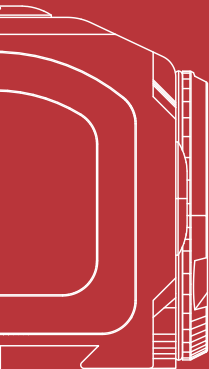


 VICTOPTICS

USER MANUAL

SRD 1x18x20 VOD



SRD

Manual # VI Series

2025022401



READ IT BEFORE USE!!!

READ AND UNDERSTAND THE CONTENTS OF YOUR FIREARM'S AND SCOPE MANUAL. FOLLOW ALL STANDARD SAFETY PRECAUTIONS AND PROCEDURES DURING FIREARM OPERATION.



VICTOPTICS



USER MANUAL



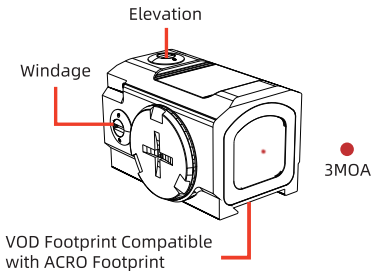
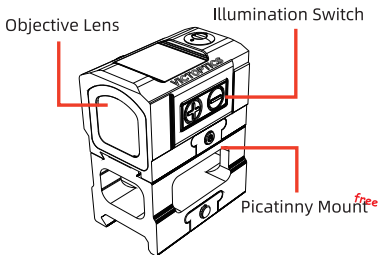
FACEBOOK



INSTAGRAM

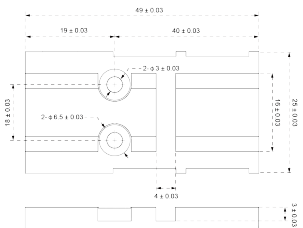
- NEVER LOOK AT THE SUN THROUGH THE SCOPE (OR ANY OTHER OPTICAL INSTRUMENT). IT MAY PERMANENTLY DAMAGE YOUR EYES.
- MAKE SURE FIREARMS ARE UNLOADED AND POINTED IN THE SAFE DIRECTION.

PRODUCT FUNCTION DIAGRAM



MOUNTING

Red Dot Footprint



Setting: mm

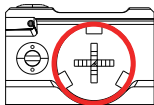
The red dot scope is intended for use on pistol slides. It adopts an industry-standard mounting interface and is compatible with the footprint that meets the criteria shown above. The red dot scope can also accept a picatinny or dovetail mount with a compatible footprint.

PRECISION ADJUSTMENT

The scope features elevation and windage adjustments. Referring to the point of impact you will need to adjust both windage and elevation screws. The elevation is the vertical (up and down) adjustment, usually on the top of the scope. Windage is the horizontal (left-to-right) adjustment, usually on the right of the scope. With the scope is mounted aim at a target 50 yards away. Slowly shoot a small 3 to 5 round test group onto your target. Adjust windage & elevation screws in the direction you want to move the bullet impact. Should your impacts be below your point of aim, dial UP to reach zero.

BATTERY EXCHANGE

Your scope illumination is powered by 1 piece of CR2032 lithium button battery. To insert, remove or replace the battery: Use the proper tool to release the battery compartment cover.



Remove the used battery from the battery compartment. Insert a new one from a reputable manufacturer with the positive (+) side UP. Screw on the battery compartment cover.

CAUTION: Should the illumination grows dim or not turn on, you will need to exchange the battery.



- **INGESTION HAZARD:** This product contains a button cell or coin battery.
- **DEATH:** or serious injury can occur if ingested.
- A swallowed button cell or coin battery can cause **Internal chemical burns** in as little as **2 hours**.
- Keep new and used batteries **out of reach of children**.
- **Seek immediate medical attention** if a battery is suspected to be swallowed or inserted inside any part of the body.
- Battery misuse or abuse may result in leakage, fire or explosion.

ACTIVATE THE RED DOT SCOPE

Press the illumination switch to activate the scope. Subsequently press the switch will change the dot intensity. The 1st level is the weakest and the 8th level is the brightest.

MAINTENANCE

Your scope, though amazingly tough, is a precision instrument that deserves reasonable cautious care.

- When cleaning the lens, first blow away any dirt and dust, or use a soft lens brush. Fingerprints and lubricants can be wiped off with lens tissue, or soft microfiber clean cotton cloth, moistened with lens cleaning fluid.
- All moving parts of the scope are permanently lubricated. Do not try to lubricate them.

- No maintenance is needed on the scope's external surface, except to occasionally wipe off dirt or fingerprints with a soft cloth.
- Use lens covers whenever convenient.

STORAGE

Avoid storing the scope in hot places, such as the passenger compartments of vehicles on hot days. The high temperatures could adversely affect the lubricants and sealants. A vehicle's trunk, a gun cabinet, or a closet is preferable. Never leave the scope where direct sunlight can enter either the scope lens.

ONE YEAR WARRANTY

Your VictOptics product is warranted free of defects in materials and workmanship for a period of 1 year from the time of purchase by the original owner. In the event of a defect under this warranty, we will, at our option, repair or replace the product at no charge to you. If we can't repair your product, we will replace it with a product of equal or better physical condition. This warranty does not cover damages caused by misuse, improper handling, loss, theft, deliberate damage, or cosmetic damage. The battery is not covered under this warranty. Also, this warranty is null and void if modification or maintenance is provided by someone other than VictOptics. This warranty is non-transferable.

For products not directly purchased from us, please contact the local dealer for applicable warranty info. Any warranty must be registered and complete warranty terms by the link:

WARRANTY.VECTOROPTICS.COM

